

LOCKS

HITCH / TRAILER / COUPLER LOCKS

Hitch Locks

Trailer Locks

Coupler Locks

Keyed Alike Hitch and Coupler Locks

Trailer Wheel Lock

Silent Hitch Pin Locks

Gooseneck Lock

Fifth Wheel Rail / King Pin Lock

RETRACTABLE CABLE LOCK

ToyLok® and Accessories

ACCESSORY LOCKS

Cable Locks

Marine Outboard Motor Lock

Spare Tire Lock





580400

BULLDOG® LIFELONG® LOCKS DELIVER TRIPLE SECURITY

- Stronger Break Resistance
- Dual Self-locking Design
- High Security Square Key Design
- Includes Dust Cap



580401

580402

LIFELONG® HITCH LOCKS WITH 5/8" DIAMETER

Part No.	Description
580400	Chrome Bent Shank Lock for Class III & IV
580401	Chrome Dogbone Lock for Class III & IV
580402	Stainless Steel Dogbone Lock for Class III & IV



580403

580404

LIFELONG® TRAILER LOCK

Part No.	Description
580403	Chrome Coupler Lock

LIFELONG® COMBO LOCK

Part No.	Description
580404	Chrome Combo Lock Set, 5/8" Dogbone Receiver and Coupler, for Class III & IV



580405

BULLDOG® LOCKS

- Includes Dust Cap
- Easy Access Models Feature Side Key Entry, Sliding Dust Cap, Lock Housing Rotates 360°

HITCH LOCKS WITH 5/8" AND 1/2" DIAMETER

Part No.	Description
580405	Stainless Steel Dogbone Lock w/Sleeve for 1-1/4" & 2" Square Receivers
580406	Stainless Steel Combo Lock Set, 5/8" Dogbone Lock w/Sleeve for 1-1/4" & 2" Square Receivers and Coupler
580407	Easy Access Lock w/Sleeve for 1-1/4" & 2" Square Receivers



580406

580407

TRAILER LOCKS

Part No.	Description
580408	Stainless Steel Coupler Lock
580409	Easy Access Long Coupler Lock
580410	Easy Access Adjustable Coupler Lock
TK100 0100	Trailer Keeper® Lock - Heavy-duty, hardened steel construction. Adjustable to fit most trailer wheels up to 15". Includes brass lock and key set.



580408

580409



580410



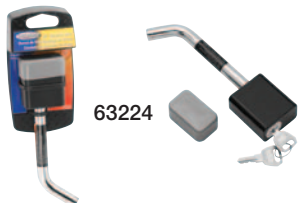
TK100 0100



HITCH LOCKS WITH 5/8" AND 1/2" DIAMETER

Part No.	Description
63234*	Dogbone Lock w/Sleeve for 1-1/4", 2" & 2-1/2" Square Receivers
63248	Bent Pin Lock w/Extra Pin for 1-1/4" & 2" Square Receivers

* not compatible with 18K Titan® Receivers



HITCH LOCKS WITH 1/2" DIAMETER

Part No.	Description
63224	Bent Pin Lock for 1-1/4" Square Receivers



HITCH LOCKS WITH 5/8" DIAMETER

Part No.	Description
63223	Bent Pin Lock for 2" & 2-1/2" Square Receivers
63252	Dogbone Lock for 2-1/2" Square Receivers, 3-1/2" Span, Class V
63253	Bent Pin Lock for 2-1/2" Square Receivers, 3-1/2" Span, Class V



TRAILER LOCKS

Part No.	Description
63225	Coupler Lock
63230	Brass Coupler Lock
63226	Universal Coupler Lock
63227	Coupler Lock for 2-5/16" Ball
63228	Coupler Lock for 2" Ball



COMBO LOCKS (HITCH, 5/8" & 1/2" DIA., AND TRAILER)

Part No.	Description
63249	Combo Lock Set, Bent Pin/Brass Coupler, for 1-1/4" & 2" Square Receivers
63250	Combo Lock Set, Dogbone Receiver/Coupler, for 1-1/4" & 2" Square Receivers



SILENT HITCH PIN AND LOCK SYSTEM

Eliminates noise associated with hitch accessories rattling against receiver tube. Unique design holds drawtube tight inside hitch receiver tube. For use with hollow shank ball mounts only.



Part No.	Description
63232	Class III Silent Hitch Pin, 5/8" design for 2" Square Receivers w/lock and wrench
63232-025	Class III Silent Hitch Pin, 5/8" design (25 pack)
63146	Silent Hitch Pin w/Handle and Clip, 5/8" for 2" Square Receivers
63145-025	Silent Hitch Pin w/Clip, 5/8" for 2" Square Receivers (25-pack)



New



63216KA 63219KA 63220KA

KEYED ALIKE COUPLER AND HITCH LOCKS

- Avoid the complication of having to keep track of different keys for every lock
- Includes 2 keys
- Order in multiples of 3 / minimum order is 3 locks (TP20A1534 minimum is 21 locks)

Part No.	Description
63216KA	KEYED ALIKE 1/2" Receiver Lock for Class II Receiver Hitches
63217KA	KEYED ALIKE 5/8" Receiver Lock for Class III & IV Receiver Hitches
63218KA	KEYED ALIKE Class II 1/2" Receiver Lock and 1/2" Span Style Coupler Lock
63219KA	KEYED ALIKE Class III & IV 5/8" Receiver Lock and 1/2" Span Style Coupler Lock
63220KA	KEYED ALIKE 1/2" Span Style Coupler Lock
63221KA	KEYED ALIKE 2" Span Style Coupler Lock with 1/4" Pin
63222KA	KEYED ALIKE 2-1/2" Span Style Coupler Lock with 1/4" Pin
TP20A1534	KEYED ALIKE 2" Coupler Lock

New



TP20A1534

TRAILER GUARDIAN LOCKS

- Helps prevent accidental decoupling
- Ability to lock and secure the trailer on the tow vehicle
- Two piece construction

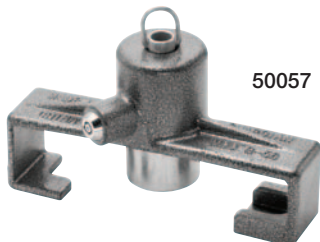


63235 63236

Part No.	Description
63235	Single Arm Lock for 2-1/2" Wide Ball Mnt. Platform w/1" Ball Hole
63236	Dual Arm Lock for 2-1/2" Wide Ball Mnt. Platform w/1" Ball Hole
63237	Single Arm Lock for 3" Wide Ball Mnt. Platform w/1" Ball Hole
63238	Dual Arm Lock for 3" Wide Ball Mnt. Platform w/1" Ball Hole

Note: Cannot be used with some ball mounts in the rise position.

GOOSENECK LOCK



50057

Part No.	Description
50057	Gooseneck Lock

FIFTH WHEEL LOCKS



50222

Part No.	Description
KING PIN LOCKS	
50222	Fifth Wheel King Pin Lock
63251	Fifth Wheel King Pin Lock, Extruded T6 Tempered Aluminum Body
RAIL LOCK	
63254	Fifth Wheel Rail Lock, Push Button, Replaces One Locking Pin



63251



63254





TL1020

LOCK IT UP.

ToyLok retractable cable system has a tamper resistant design that makes it difficult for scavengers to swipe your stuff!

CONVENIENCE

Retractable cable is easy to use and store, built-in clutch controls cable snap back PVC coated cable reduces abrasion and rub marks on your gear.

STRENGTH

Stainless Steel cable ends withstand heavy abuse. Cable rated to 8,000 lbs.

SECURITY

Finely braided cable makes it difficult for bolt cutters to work. 11 gauge welded steel housing. Breakaway security nut provides a theft resistant installation.



MOUNTING OPTIONS

TL005



RECEIVER MOUNT

Mount to any Class III hitch receiver.

TL002



FIFTH WHEEL KING PIN MOUNT

Attaches to fifth-wheel pin coupler.

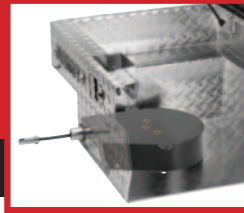
TL006



STAKE POCKET MOUNT

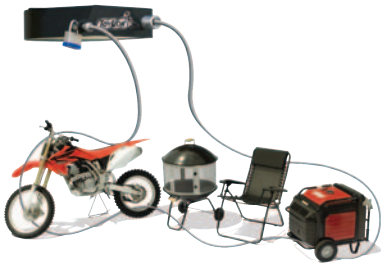
Attaches to pick-up truck stake pockets.

TL010



TOOLBOX MOUNT

Modifies toolbox to accept ToyLok retractable cable system.

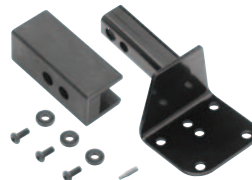


TL2021

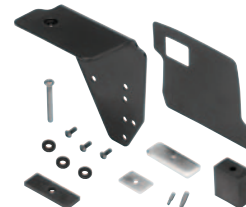


Part No.	Description
TL1020	18' ToyLok Cable Lock (Mount Not Included)
TL002	ToyLok Adapter, Fifth Wheel King Pin Mount for #TL1020 only
TL005	ToyLok Adapter, 1-1/4" Sq. and 2" Sq. Receiver Mounting Kit for #TL1020, #TL2021
TL006	ToyLok Adapter, Stake Pocket Mount for #TL1020, #TL2021
TL007	ToyLok Adapter, Trailer Frame Mount for #TL1020, #TL2021
TL008	ToyLok Adapter, RV Bumper Mount for #TL1020, #TL2021
TL009	ToyLok Adapter, ATV & UTV Mount for #TL1020, #TL2021
TL010	ToyLok Adapter, Toolbox Mount for #TL1020, #TL2021
TL2021	ToyLok, 15' Cable Lock with padlock

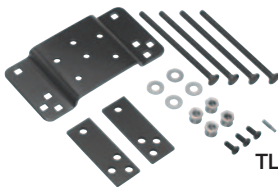
TL005



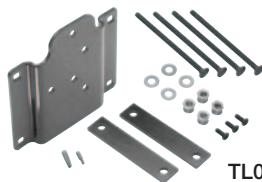
TL006



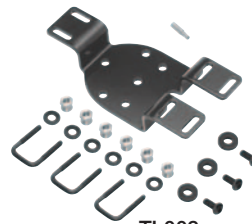
TL007



TL008



TL009



TL010





63233

CABLE LOCK

- Cable locks secure items to the vehicle
- Attractive point-of-purchase display packaging



Part No.	Description
CLK6 0700	6' Cable Lock w/ Key
CLK15 0100	15' Cable Lock w/ Key
63233	10' Dead Bolt Aircraft Cable with Lock, Case Lot 12



OML 0127

MARINE OUTBOARD MOTOR LOCK



- Heavy-duty barrel key lock mechanism for maximum security
- Foam filler insert reduces noise and vibration
- Mounts on most outboard motors

Part No.	Description
OML 0127	Outboard Motor Lock



STL 0603

SPARE TIRE LOCK



- Fits over wheel studs (up to 9/16" diameter) to help deter theft.
- Removable plug allows longer wheel studs to protrude through cap, and locking tab provides positive locking feature to help prevent lock from turning.

Part No.	Description
STL 0603	Spare Tire Lock